

April 2021

IMPORTANT INFORMATION

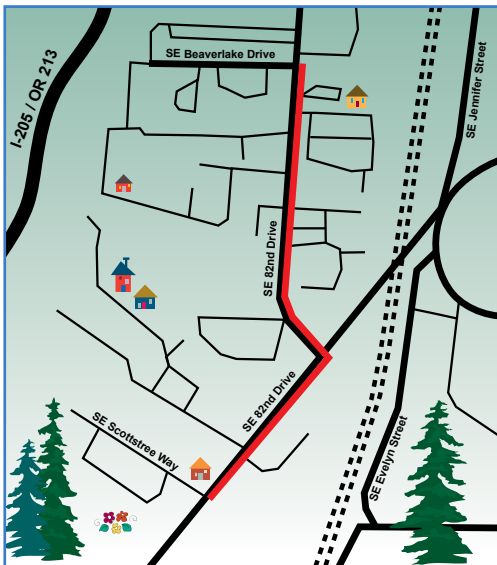
CRW CLOSURES:

Monday, May 31, 2021- Memorial Day

REGARDING YOUR WATER RATES

Clackamas River Water is pleased to provide you with a reliable supply of quality water from the river to your tap 24 hours a day, every day. Water rates help us to fulfill our mission. As part of our commitment to keep you informed, we want to make you aware that our water rates will be adjusted after the April 30, 2021 billing cycle. These rates were approved by the Board of Commissioners in March 2014 and represent year eight of the eight-year rate plan providing water rate revenue for system operations and improvements to ensure quality water is delivered to you.

<https://crwater.com/rates-and-charges>.



Waterline Improvement Project Coming Soon

The **82nd Dr. Waterline – Phase 1** project is on schedule. Trench Line Excavation Inc. has been hired to build the project. Expect to see them on site beginning in May and working through July. For those traveling in the project area, all business access will be open, please be safe and thank you for your patience. The area impacted is along 82nd Dr. between Scottstree Way and Beaverlake Drive, in Clackamas, Oregon.

Time of Day Affected:

Monday – Friday, 7:00 a.m. – 5:00 p.m.

(Occasional night shift work may be required, and is yet to be determined.)

Bi-Monthly (1) Service Charges for All Direct Service Customers				Commodity Charge for Direct Service Customers Per CCF (100 Cubic Feet = 748 gallons)			
Meter Size	Prior to May 1	New Rate Effective May 1		Volume CCF	Prior to May 1	New Rate May 1	
Full 3/4"	\$ 55.51	\$ 57.18		Block 1	1 - 4	\$ 2.37	\$ 2.44
1"	76.70	78.67		Block 2	5 - 8	2.63	2.71
1 1/2"	109.13	112.41		Block 3	9 - 24	3.13	3.23
2"	146.61	151.01		Block 4	25 & Up	3.99	4.11
3"	235.52	242.38		Multi-Family, Commercial & Industrial			
4"	362.00	372.86		Up to 1.5X			
6"	678.60	698.82		Block 1	Winter Avg	\$ 2.91	\$ 2.99
8"	1,533.44	1,579.44			Above 1.5X		
10"	2,412.37	2,484.74		Block 2	Winter Avg	\$ 3.63	\$ 3.74
12"	2,914.60	3,002.04					

(1) CRW bills every two months, Commercial accounts North of the Clackamas River on the odd months and all other customers on the even months.

BUDGET HEARING

The Clackamas River Water Budget Committee met on April 22 to hear the budget message and to deliberate on the proposed Biennial 2021 – 2023 budget. A Budget Hearing will be held on June 10 for the Board of Commissioners to adopt the approved budget. The budget document is available on the CRW website at: <https://crwater.com>.

WATER BILL UPDATE

For the past year CRW has foregone late fees on all customer accounts and we have encouraged customers to contact us if they were impacted by COVID and unable to pay in full. Effective with the April 30 bill we will reinstate late fees on accounts that have past due balances and have not contacted our office at **(503)722-9220** or by email at crw@crwater.com. The April bill due date is May 15th. We allow a grace period if paid before May 25th. On or after May 25th, late fees of \$5 or 5% of the balance due (whichever is larger) will be assessed and late notices will be mailed to customers with outstanding balances in excess of \$74.99. Those customers impacted by the pandemic who have an outstanding balance are encouraged to contact us to make payment arrangements.

Time for Annual Backflow Testing

What do “backflow” and “cross connection” mean?

Why is it important to test?

Providing safe drinking water to our customers is our primary focus, but there are ways you can help protect drinking water too! One way is to make sure you don't have any cross connections in your private plumbing system. Another way is to get your backflow prevention assembly tested annually. The property owner is responsible for preventing contaminants from entering the public water system through their private plumbing system. Where required, an approved backflow prevention assembly must be installed, maintained and tested annually to make sure it's working properly. Help protect our water system by getting your backflow prevention assembly tested by June 30, 2021.

What is backflow? Drinking water is delivered to your tap in pressurized water pipes. Normally the water flows in one direction at constant pressure.

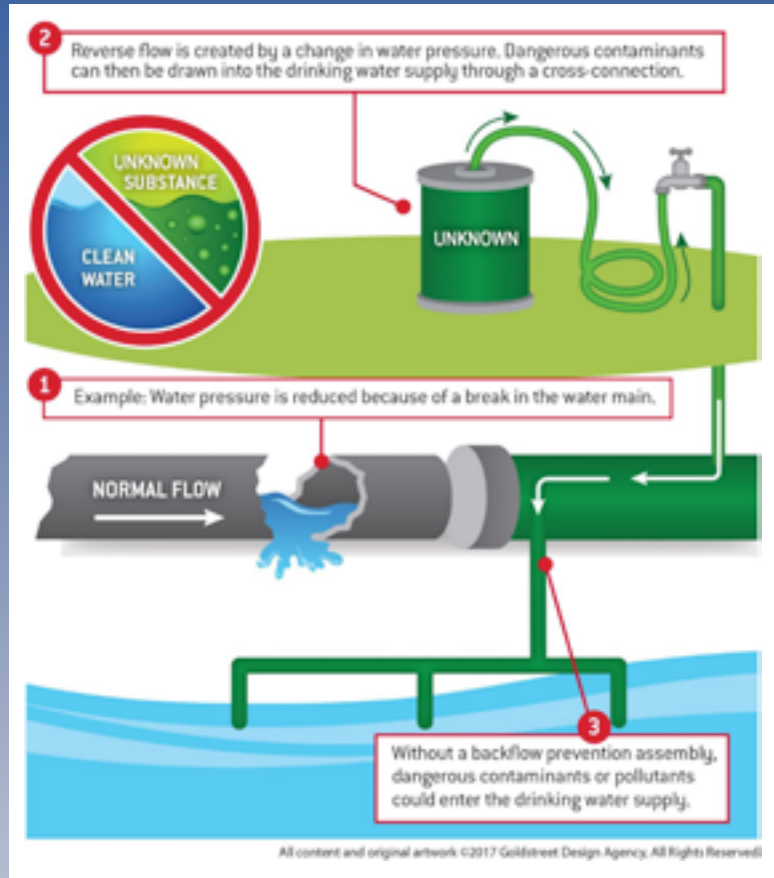


However, under unusual circumstances such as very large main breaks or large-scale firefighting, system pressure may drop low enough to cause “backflow” conditions. Water flows

backwards during these events, increasing the risk of contamination from properties not equipped with an approved backflow prevention assembly.

What is cross connection? A cross connection is any physical connection between piping used for drinking water and piping used for other types of water or liquids. Some of these contaminants might only affect the taste or odor of the water, but some may make the water unsafe to drink. Examples of common cross connections are hot tubs, sprinkler/irrigation systems, garden hoses, and auxiliary wells.

For more information www.cewater.com/backflow.



Actual testing is required by a state certified test professional. Please visit www.cewater.com/backflow for a list of certified testers.

Pay your bill online at:

<https://billing.cewater.com>

503-722-9220



find us on



Monday - Thursday 7:30 a.m. - 5:00 p.m.
Friday 7:30 a.m. - 4:00 p.m.



16770 SE 82nd Drive, Clackamas, 97015
503-722-9220 www.cewater.com